

SOUTHWESTERN DIVISION PACESETTERS



MISSION / PEOPLE / TEAMWORK



US Army Corps
of Engineers®



Corps of Engineers Footprint



9 Divisions

- Northwestern
- South Pacific
- Southwestern
- North Atlantic
- South Atlantic
- Pacific Ocean
- Great Lakes
- Mississippi Valley
- Transatlantic

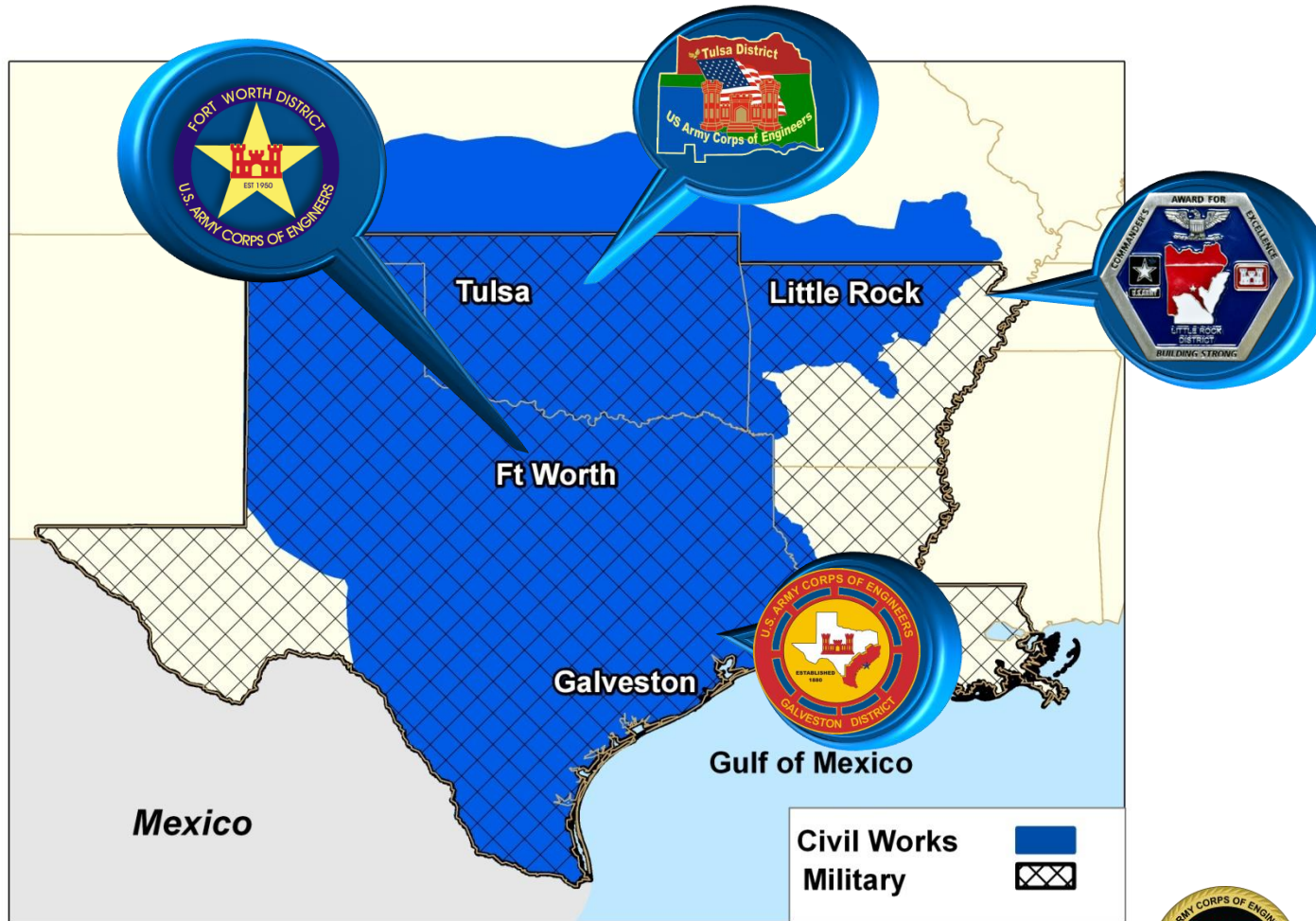
43 Districts



US Army Corps
of Engineers®



Southwestern Division Footprint



US Army Corps of Engineers®





Col. Paul E. Owen
SWD Commander



Colonel Donovan D. Ollar
SWD Deputy Commander



Mr. Mark L. Mazzanti, SES
Director of Programs



Mr. Pete G. Perez, SES
Director of Regional Business

Southwestern Division Leadership Team



Colonel Calvin Hudson II
Ft Worth District Commander



Colonel Lars Zetterstrom
Galveston District Commander



Colonel Robert G. Dixon
Little Rock District Commander



Colonel Christopher A. Hussin
Tulsa District Commander



US Army Corps
of Engineers®



Southwestern Division Major Mission Areas

Civil Works



Military Programs



Interagency &
International Services



US Army Corps
of Engineers®



Civil Works Mission Areas

Water Supply

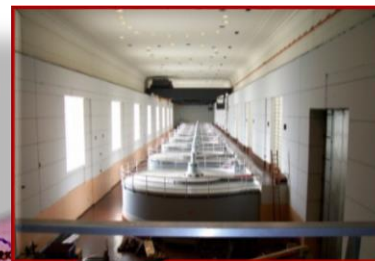
- Water storage enough to provide water to 4.5 million people or
- More than 70% of the Corps water supply



Lake Lavon, Texas

Inland Navigation (MKARNS & GIWW)

- MKARNS: 18 locks & dams
- 423 miles of GIWW



Bull Shoals Powerhouse
Arkansas

Hydroelectric Power

- 18 power plants in 6 states produce 6.7 billion kw hours
- 87% of regional capacity, second in the Corps
- Generates power to 8 million customers in six states

Environmental Stewardship

- 1 million acres and over 1 thousand miles of shoreline
- Riverine and costal wetlands



Flood Damage Reduction

- 74 flood damage reduction lakes/reservoirs
- 33.M acre-feet of flood storage
- 760 miles of local flood protection projects
- \$85b in cumulative flood damage prevention



Dallas Floodway

Regulatory

- Over 5,000 permit actions and 4,000 jurisdictional actions annually.
 - these actions result in developmental projects that create thousands of jobs.



Eufala Lake, Oklahoma

Recreation

- 20 percent of the Corps' total recreation projects located within the regional boundary
- 80 million visitors at 90 operating projects located in five states contributing \$2.5 billion in visitor spending annually to the regional economy.



Houston Ship Channel

Navigation (Ports and Channels)

- 4 of the Nation's "Top Ten" ports
- 32 channels (15 deep draft, 17 shallow draft)
- 533 M tons of commerce annually
- SWD is the 2nd largest region for waterborne commerce in the Corps.



US Army Corps
of Engineers®



Military Missions

- Engineering
- Construction
- Real Estate
- Installation Support
- Environmental Engineering/Services
- Interagency & International Services



Support to Department of Homeland Security

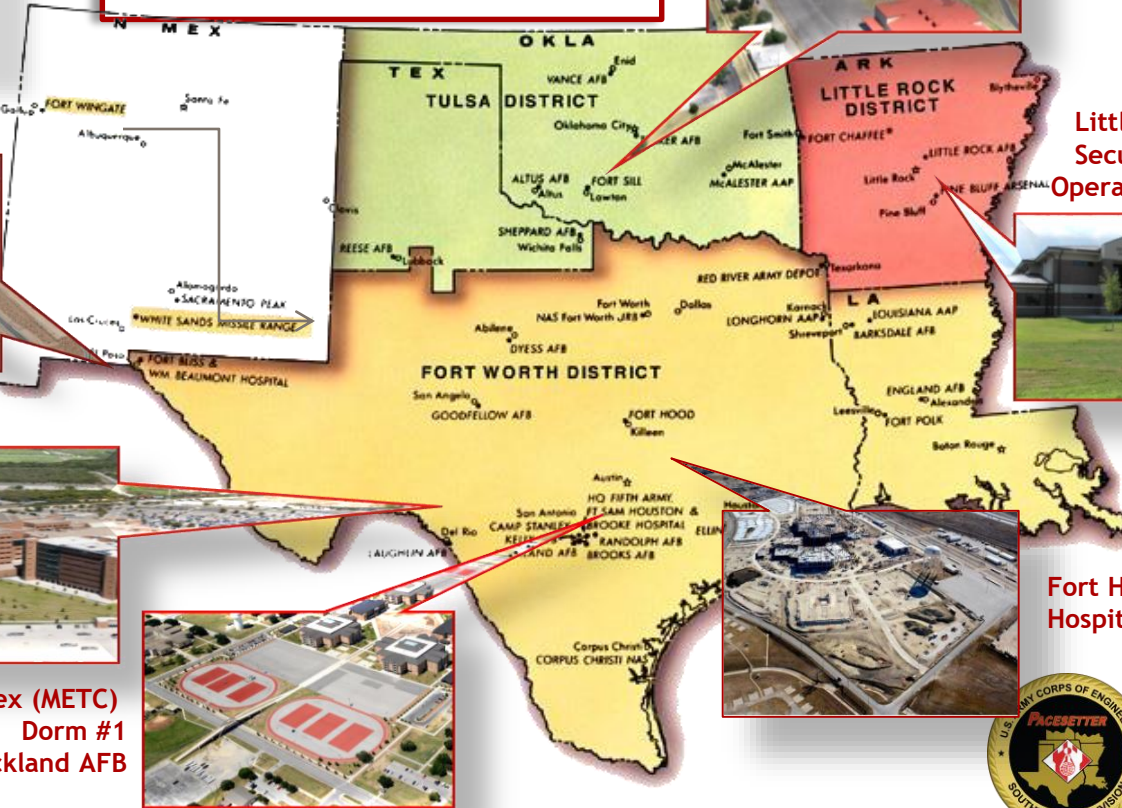
Five States
9 major Army Posts
9 major Air Force Bases



Air Defense
Artillery
School
Fort Sill



BRAC Program - Fort Bliss



Little Rock AFB
Security Forces
Operations Facility



San Antonio Military Medical Center



Medical Education & Training Complex (METC)
Dorm #1
Lackland AFB



Fort Hood Hospital



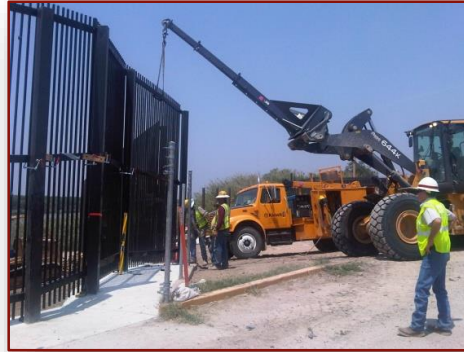
US Army Corps of Engineers®



Interagency & International Services



Nogales, Ariz., Border Fence Replacement



Eagle Pass, Texas, Border Fence Construction



Environmental Restoration-
Munitions Removal



High Explosive Pressing Facility,
Pantex Plant, OK



Ajo, Ariz., Border Patrol Station



Pittsburg, N.H. Land Point of Entry



US Army Corps
of Engineers®



Connect With Us!



Facebook:

www.facebook.com/swdusace



Twitter:

www.twitter.com/usace_sw



Flickr:

www.flickr.com/usaceswd

Pacesetter Live 

Pacesetter Live!

<http://pacesetterlive.dodlive.mil/>

Online:

www.swd.usace.army.mil



US Army Corps
of Engineers®

